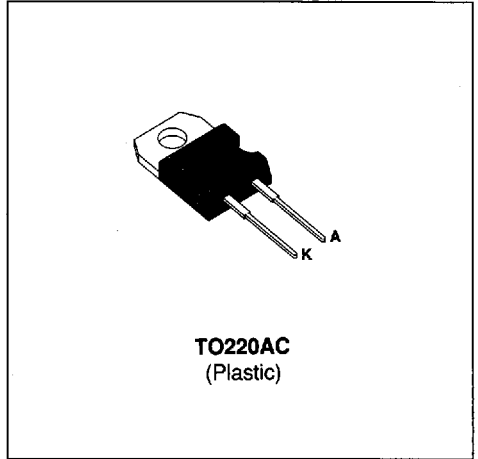


## FAST RECOVERY RECTIFIER DIODES

- VERY HIGH REVERSE VOLTAGE CAPABILITY
- VERY LOW REVERSE RECOVERY TIME
- VERY LOW SWITCHING LOSSES
- LOW NOISE TURN-OFF SWITCHING



### SUITABLE APPLICATIONS

- FREE WHEELING DIODE IN CONVERTERS AND MOTOR CONTROL CIRCUITS

### ABSOLUTE RATINGS (limiting values)

Symbol	Parameter		Value	Unit
$I_{FRM}$	Repetitive Peak Forward Current	$t_p \leq 10\mu s$	150	A
$I_{F(RMS)}$	RMS Forward Current		25	A
$I_{F(AV)}$	Average Forward Current	$T_{case} = 100^\circ C$ $\delta = 0.5$	12	A
$I_{FSM}$	Surge non Repetitive Forward Current		75	A
P	Power Dissipation	$T_{case} = 100^\circ C$	25	W
$T_{stg}$ $T_j$	Storage and Junction Temperature Range		- 40 to + 150	$^\circ C$

Symbol	Parameter	BYT 12 P-		Unit
		600	800	
$V_{RRM}$	Repetitive Peak Reverse Voltage	600	800	V
$V_{RSM}$	Non Repetitive Peak Reverse Voltage	640	850	V

### THERMAL RESISTANCE

Symbol	Parameter	Value	Unit
$R_{th(j-c)}$	Junction-case	2	$^\circ C/W$

www.DataSheet4U.com  
**ELECTRICAL CHARACTERISTICS**

**STATIC CHARACTERISTICS**

Symbol	Test Conditions		Min.	Typ.	Max.	Unit
$I_R$	$T_j = 25^\circ\text{C}$	$V_R = V_{RRM}$			50	$\mu\text{A}$
	$T_j = 100^\circ\text{C}$				2.5	$\text{mA}$
$V_F$	$T_j = 25^\circ\text{C}$	$I_F = 12\text{A}$			1.9	V
	$T_j = 100^\circ\text{C}$				1.8	

**RECOVERY CHARACTERISTICS**

Symbol	Test Conditions		Min.	Typ.	Max.	Unit
$t_{rr}$	$T_j = 25^\circ\text{C}$	$I_F = 1\text{A}$ $di_F/dt = -15\text{A}/\mu\text{s}$ $V_R = 30\text{V}$			120	ns
		$I_F = 0.5\text{A}$ $I_R = 1\text{A}$ $I_{rr} = 0.25\text{A}$			50	

**TURN-OFF SWITCHING CHARACTERISTICS (Without Series Inductance)**

Symbol	Parameter		Min.	Typ.	Max.	Unit
$t_{IRM}$	$di_F/dt = -50\text{A}/\mu\text{s}$	$V_{CC} = 200\text{V}$ $I_F = 12\text{A}$ $L_p \leq 0.05\mu\text{H}$			160	ns
	$di_F/dt = -100\text{A}/\mu\text{s}$			100		
$I_{RM}$	$di_F/dt = -50\text{A}/\mu\text{s}$	$T_j = 100^\circ\text{C}$ See figure 11			6	A
	$di_F/dt = -100\text{A}/\mu\text{s}$			7.5		

**TURN-OFF OVERVOLTAGE COEFFICIENT (With Series Inductance)**

Symbol	Test Conditions		Min.	Typ.	Max.	Unit
$C = \frac{V_{RP}}{V_{CC}}$	$T_j = 100^\circ\text{C}$ $di_F/dt = -12\text{A}/\mu\text{s}$	$V_{CC} = 150\text{V}$ $I_F = I_{F(AV)}$ $L_p = 4\mu\text{H}$ See Figure 12			4	

Note : Applicable to BYT 12 P-800 only.

To evaluate the conduction losses use the following equation :

$$V_F = 1.47 + 0.026 I_F \qquad P = 1.47 \times I_{F(AV)} + 0.026 I_F^2_{(RMS)}$$

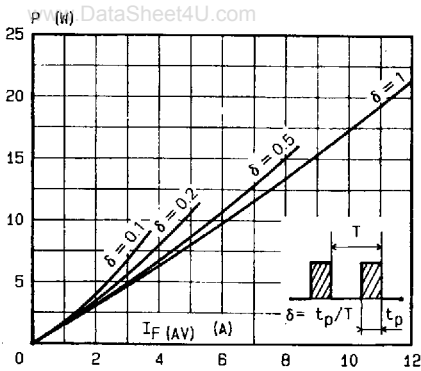


FIGURE 1 : Low frequency power losses versus average current.

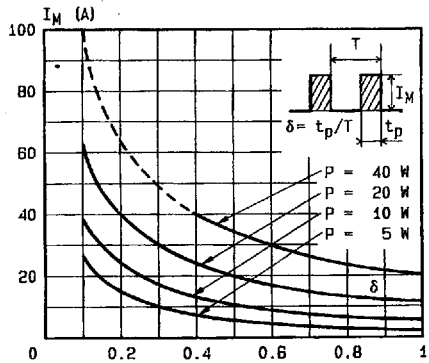


FIGURE 2 : Peak current versus form factor.

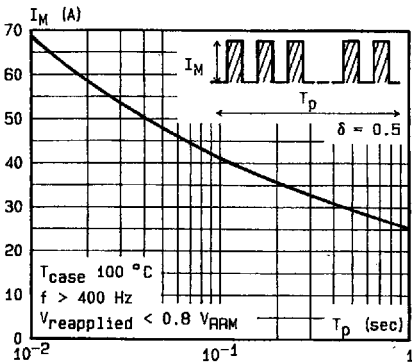


FIGURE 3 : Non repetitive peak surge current versus overload duration.

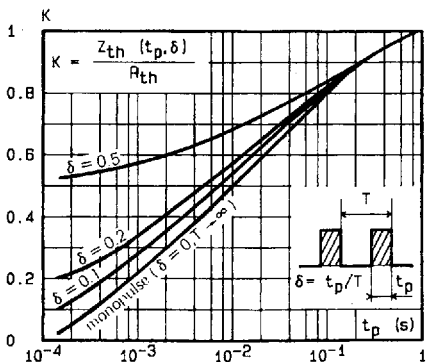


FIGURE 4 : Thermal impedance versus pulse width.

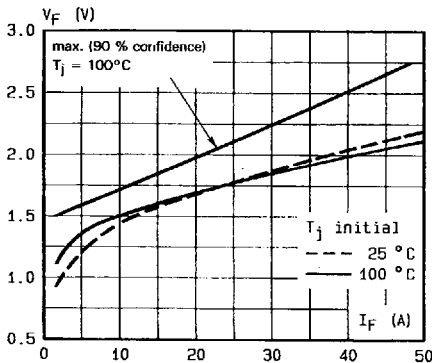


FIGURE 5 : Voltage drop versus forward current.

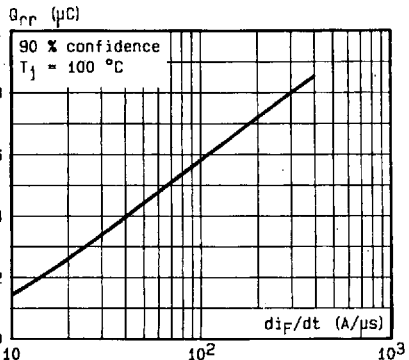


FIGURE 6 : Recovery time versus di/dt.

www.DataSheet4U.com

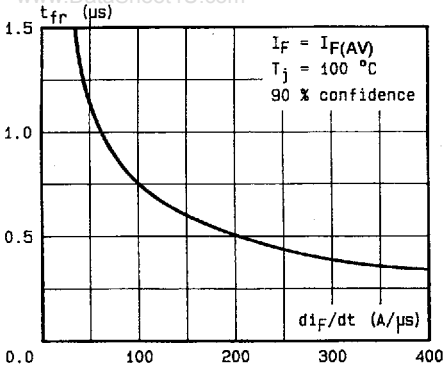


FIGURE 7 : Recovery time versus  $di_F/dt$ .

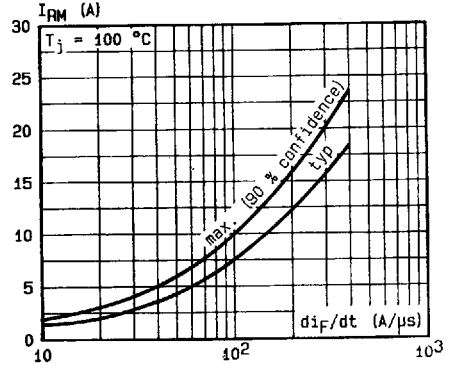


FIGURE 8 : Peak reverse current versus  $di_F/dt$ .

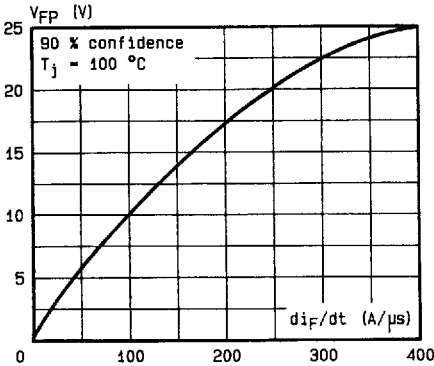


FIGURE 9 : Peak forward voltage versus  $di_F/dt$ .

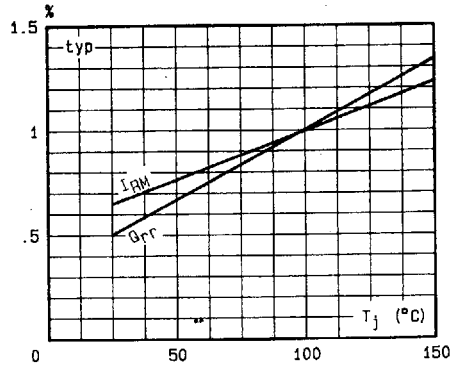


FIGURE 10 : Dynamic parameters versus junction temperature.

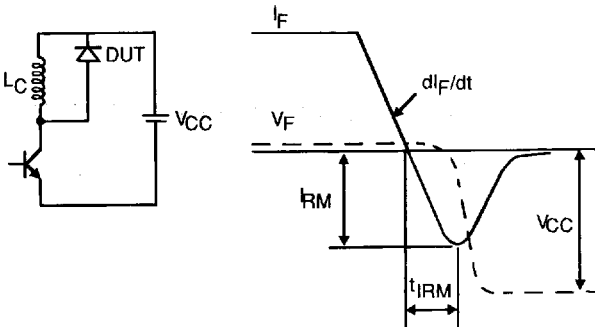


Figure 11 : Turn-off switching characteristics (without series inductance).

www.DataSheet4U.com

www.DataSheet4U.com

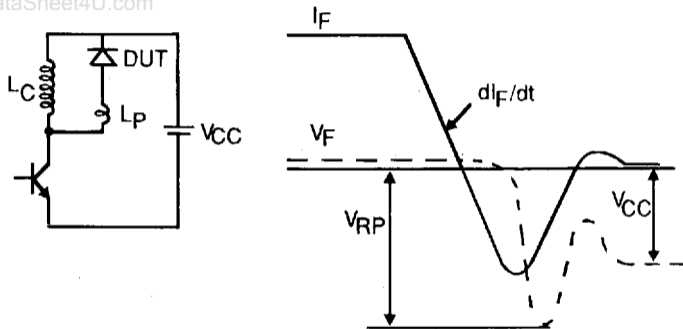


Figure 12 : Turn-off switching characteristics (with series inductance). [www.DataSheet4U.com](http://www.DataSheet4U.com)